



**kerakoll**  
Sigillante decorativo per facciate e marmi in 12 colori di design. Prodotto green per bioedilizia.

EN - Decorative sealant for facades and marbles in 12 colors. Green product for bioedilizia.  
DE - Dekoratives Putz für Fassaden und Marmor in 12 Farben. Grünes Produkt für Bioedilizia.  
FR - Adhésif décoratif pour façades et marbres en 12 couleurs. Produit vert pour bioedilizia.  
IT - Sigillante decorativo per facciate e marmi in 12 colori di design. Prodotto green per bioedilizia.  
PT - Adesivo decorativo para fachadas e mármore em 12 cores. Produto verde para bioedilizia.  
ES - Adhesivo decorativo para fachadas y mármoles en 12 colores. Producto verde para bioedilizia.  
RU - Декоративный герметик для фасадов и мрамора в 12 цветах. Зеленый продукт для биоэкологии.  
CZ - Dekorační těsnicí pasta pro fasády a mramor v 12 barvách. Produkt zelený pro bioedilizi.  
PL - Klej dekoracyjny do elewacji i marmuru w 12 kolorach. Produkt zielony dla bioedycji.  
HU - Dekoratív szigetelőanyag falakhoz és márványhoz 12 színben. Környezetbarát termék.  
SK - Dekoračný zátlačný materiál pre fasády a mramor v 12 farbách. Zelený produkt pre bioedíciu.  
SI - Dekorativni zapečevalnik za fasade in marmornine v 12 barvah. Zeleni izdelek za bioedilicijo.  
LT - Dekoratyvusis sandariklis sienoms ir marmurams 12 spalvose. Žalia produkcija.  
LV - Dekoratīvsais hermētisks materiāls fasādēm un marmuram 12 krāsās. Zaļā produkcija.  
UK - Декоративний герметик для фасадів та мармуру в 12 кольорах. Зелений продукт для біобудівництва.  
BY - Дэкарацыйны герметык для фасаднаў і мармурнаў у 12 колерах. Зелены прадукт для біоэкалогіі.  
BG - Декоративен запечатващ материал за фасади и мрамор в 12 цвята. Зелено производство.  
RO - Adesiv decorativ pentru fațade și marmură în 12 culori de design. Produs verde pentru bioedilție.  
HR - Dekorativni zapečevalnik za fasade i mramor u 12 boja. Zeleni proizvod za bioediliciju.  
CRO - Dekorativni zapečevalnik za fasade i mramor u 12 boja. Zeleni proizvod za bioediliciju.  
SRB - Dekorativni zapečevalnik za fasade i mramor u 12 boja. Zeleni proizvod za bioediliciju.  
MNE - Dekorativni zapečevalnik za fasade i mramor u 12 boja. Zeleni proizvod za bioediliciju.  
BOS - Dekorativni zapečevalnik za fasade i mramor u 12 boja. Zeleni proizvod za bioediliciju.  
SRM - Dekorativni zapečevalnik za fasade i mramor u 12 boja. Zeleni proizvod za bioediliciju.  
MCO - Adesivo decorativo para fachadas e mármore em 12 cores. Produto verde para bioedilizia.  
PRT - Adesivo decorativo para fachadas e mármore em 12 cores. Produto verde para bioedilizia.  
ITA - Sigillante decorativo per facciate e marmi in 12 colori di design. Prodotto green per bioedilizia.  
ESP - Adhesivo decorativo para fachadas y mármoles en 12 colores. Producto verde para bioedilizia.  
FRA - Adhésif décoratif pour façades et marbres en 12 couleurs. Produit vert pour bioedilizia.  
DEU - Dekoratives Putz für Fassaden und Marmor in 12 Farben. Grünes Produkt für Bioedilizia.  
ENG - Decorative sealant for facades and marbles in 12 colors. Green product for bioedilizia.



LA POSA PER ECCELLENZA  
**ECHNORIUNITE**

# Tile laying systems

---



Tile laying on screed with heating/cooling system

Page 6

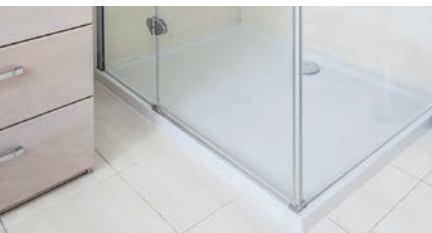
---



Tile laying on existing tiles and natural stone

Page 8

---



Ceramic laying in damp environments and showers on cement-based and gypsum substrates

Page 10

---



Tile laying in areas with heavy traffic

Page 12

---



Laying of thin and large size tiles

Page 14

---



Tile laying on anti-fracture membrane

Page 16

---





**Tile laying on anti-cracking membrane on screed, for internal application**

**Page 18**

---



**Tile laying on terraces and balconies**

**Page 20**

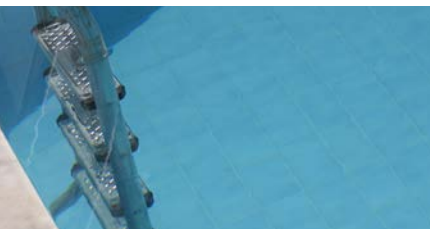
---



**Tile laying on anti-cracking waterproofing membrane**

**Page 22**

---



**Tile laying in swimming pool**

**Page 24**

---



**Tile laying on façades**

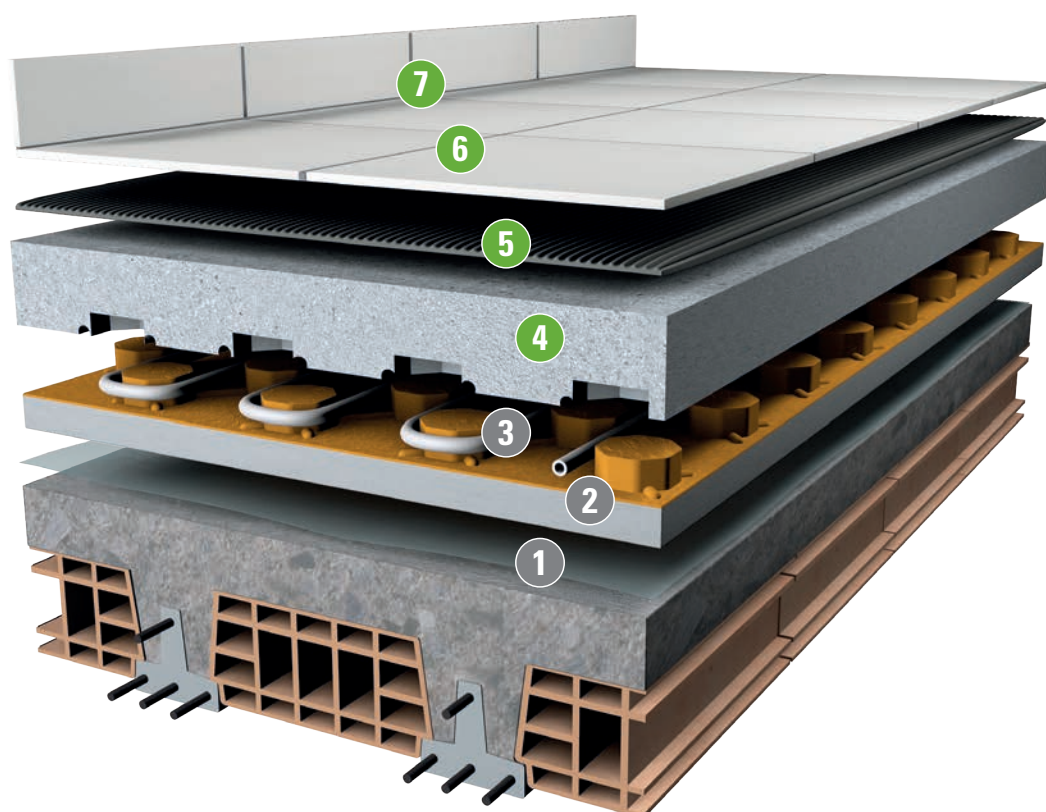
**Page 26**

---



## Tile laying on screed with heating/cooling system

- Guarantees excellent heat diffusion
- Optimises heating system performance
- Insensitive to changes in temperature
- Fast completion of work
- System with very low VOC emissions, improves the quality of air and increases the level of health protection for operators



7\_



### Expansion joints

#### Silicone Color

Decorative sealant for tiles and mosaic in 50 design colours.  
 Green product for bio-building.

Rating 3  
 Coverage see data sheet



6\_



### Grouting

#### Fugabella® Color

Decorative Resina-cemento® (resin-cement) for grouting of ceramic and porcelain tiles, mosaic and natural stone in a 50-colour design range. Green product for bio-building.

Rating 4  
 Coverage see data sheet



5\_



### Tile laying

#### TR Flex S1

Deformable mineral adhesive with an extremely high natural additive content for high performance bonding of porcelain tiles, ceramic tiles and natural stone, with no vertical slip and long open time.

Coverage  $\approx 2 - 5 \text{ kg/m}^2$



4\_



### Substrate

#### Keracem® Eco Pronto

Certified, ready-to-use, eco-friendly, normal-setting and rapid-drying mineral screed to be covered with adhesives.

Rating 5  
 Preparation of the screed  
 $\approx 16 - 18 \text{ kg/m}^2$   
 per cm of thickness



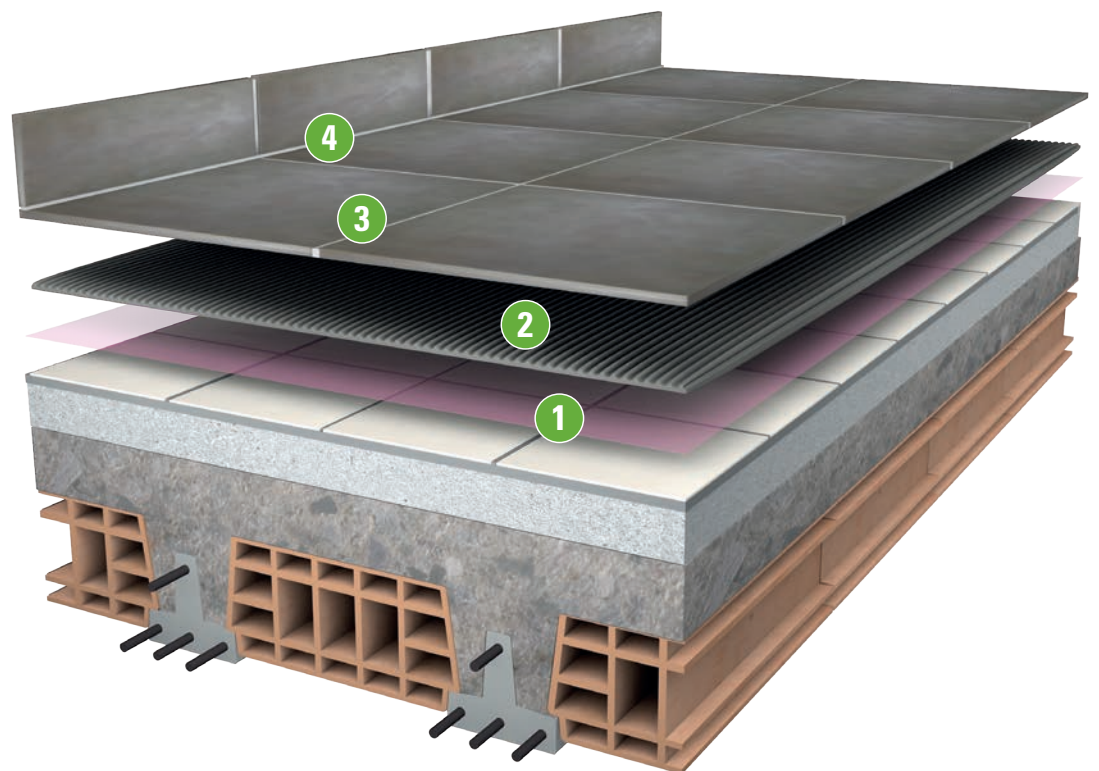
### Heating/cooling system

- 3\_Water-based heating/cooling system
- 2\_Pre-formed, high modulus insulating panel
- 1\_PVC sheet – anti-fracture vapour barrier



## Tile laying on existing tiles and natural stone

- Guarantees safe laying on existing floors
- Ideal in renovation work
- Reduces operation times
- Avoids the costs and inconvenience of removal and disposal of the existing floor
- System with very low VOC emissions, improves the quality of air and increases the level of health protection for operators





4



### Expansion joints

#### Silicone Color

Decorative sealant for tiles and mosaic in 50 design colours.  
 Green product for bio-building.

Rating 3  
 Coverage see data sheet



3



### Grouting

#### Fugabella® Color

Decorative Resina-cemento® (resin-cement) for grouting of ceramic and porcelain tiles, mosaic and natural stone in a 50-colour design range. Green product for bio-building.

Rating 4  
 Coverage see data sheet



2



### Tile laying

#### TR Flex S1

Deformable mineral adhesive with an extremely high natural additive content for high performance bonding of porcelain tiles, ceramic tiles and natural stone, with no vertical slip and long open time.

Coverage  $\approx 2 - 5 \text{ kg/m}^2$



1



### Substrate

#### Keragrip Eco

Certified, eco-friendly, water-based adhesion promoter for compact, absorbent and non-absorbent substrates.

Rating 5  
 Preparation  
 $\approx 0.1 - 0.2 \text{ kg/m}^2$



*Before levelling and/or fixing, clean the old flooring thoroughly, making sure you eliminate all traces of dirt using specific cleaning products. If in doubt, sand the surface. Fix loose elements or elements that are not perfectly fixed, and fill in any gaps with specific product.*

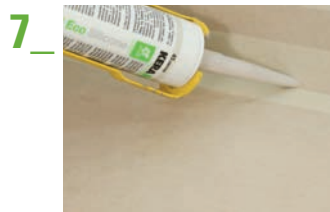


## Ceramic laying in damp environments and showers on cement-based and gypsum substrates



- Guarantees the water protection of adjacent rooms
- Suitable for renovation work
- High level of chemical stability
- System with very low VOC emissions, improves the quality of air and increases the level of health protection for operators





### Expansion joints

#### Fugabella® Eco Silicone

Eco-friendly, silicone, acetic, anti-mould organic sealant with a high level of elasticity for expansion-deformation joints.

Rating 4  
 Coverage see data sheet



### Grouting

#### Fugalite® Bio

Water-based hypo-allergenic resin for waterproof, stain-proof, silk-effect grouting of porcelain tiles, natural stones and glass mosaic.

Rating 3  
 Coverage see data sheet



### Tile laying

#### TR Flex S1

Deformable mineral adhesive with an extremely high natural additive content for high performance bonding of porcelain tiles, ceramic tiles and natural stone, with no vertical slip and long open time.

Coverage  $\approx 2 - 5 \text{ kg/m}^2$

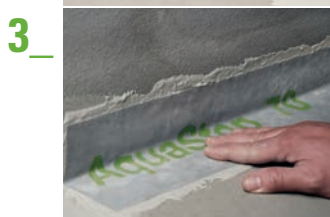


### Waterproofing

#### Nanoflex® No Limits® (2<sup>nd</sup> coat)

Super-adhesive, ultra-workable waterproof gel membrane for breathable anti-alkaline and chlorine-resistant waterproofing before laying of porcelain, ceramic tiles and natural stone.

Rating 3  
 Coverage  $\approx 1.15 \text{ kg/m}^2$   
 per mm of thickness



#### Aquastop 70

140 mm non-woven polypropylene tape with high-adhesion, alkali-resistant waterproof treatment for perimeter joints to be applied with Nanoflex® No Limits®.



#### Nanoflex® No Limits® (1<sup>st</sup> coat)

Super-adhesive, ultra-workable waterproof gel membrane for breathable anti-alkaline and chlorine-resistant waterproofing before laying of porcelain, ceramic tiles and natural stone.

Rating 3  
 Coverage  $\approx 1.15 \text{ kg/m}^2$   
 per mm of thickness



### Substrate

#### Keracem® Eco Pronto

Certified, ready-to-use, eco-friendly, normal-setting and rapid-drying mineral screed to be covered with adhesives.

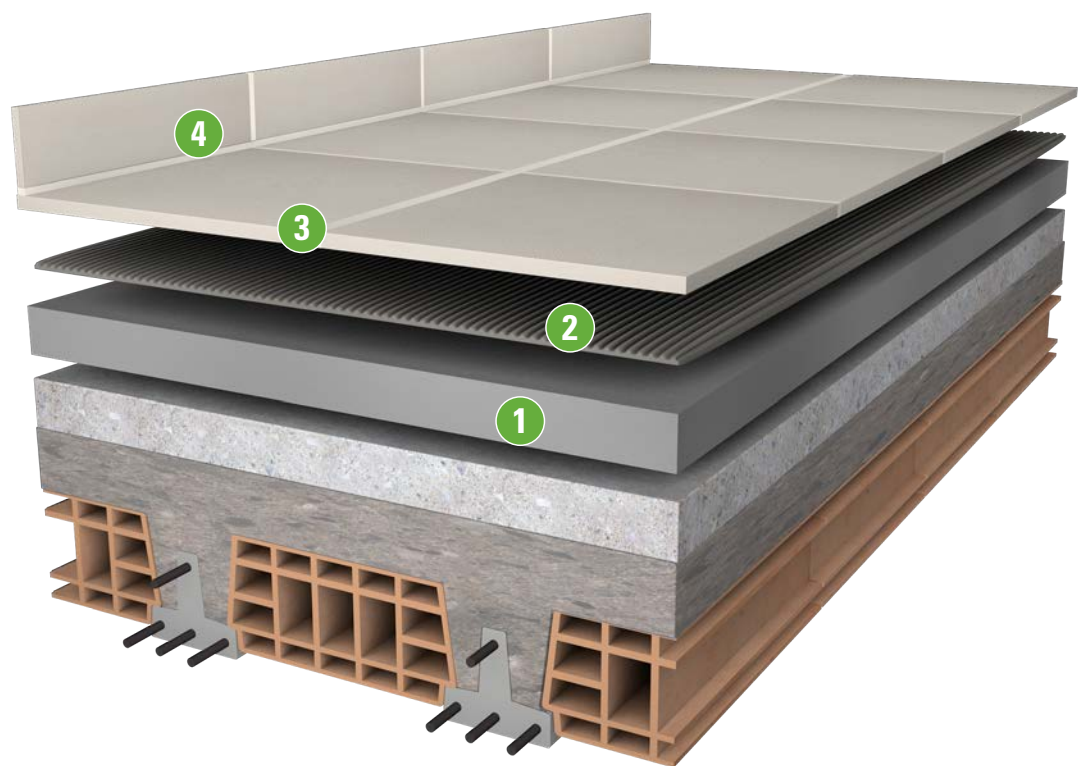
Rating 5  
 Preparation of the screed  
 $\approx 16 - 18 \text{ kg/m}^2$   
 per cm of thickness





## Tile laying in areas with heavy traffic

- Guarantees safe laying in areas subject to high levels of stress
- Ensures high resistance to static and dynamic loads
- Fast completion of work
- System with very low VOC emissions, improves the quality of air and increases the level of health protection for operators





4\_



### Expansion joints

#### Silicone Color

Decorative sealant for tiles and mosaic in 50 design colours.  
 Green product for bio-building.

Rating 3  
 Coverage see data sheet



3\_



### Grouting

#### Fugabella® Color

Decorative Resina-cemento® (resin-cement) for grouting of ceramic and porcelain tiles, mosaic and natural stone in a 50-colour design range. Green product for bio-building.

Rating 4  
 Coverage see data sheet



2\_



### Tile laying

#### TR Flex S1

Deformable mineral adhesive with an extremely high natural additive content for high performance bonding of porcelain tiles, ceramic tiles and natural stone, with no vertical slip and long open time.

Coverage  $\approx 2 - 5 \text{ kg/m}^2$



1\_



### Substrate

#### Keracem® Eco Prontoplus

Certified, ready-to-use, eco-friendly, normal-setting and rapid-drying mineral screed to be covered with adhesives.

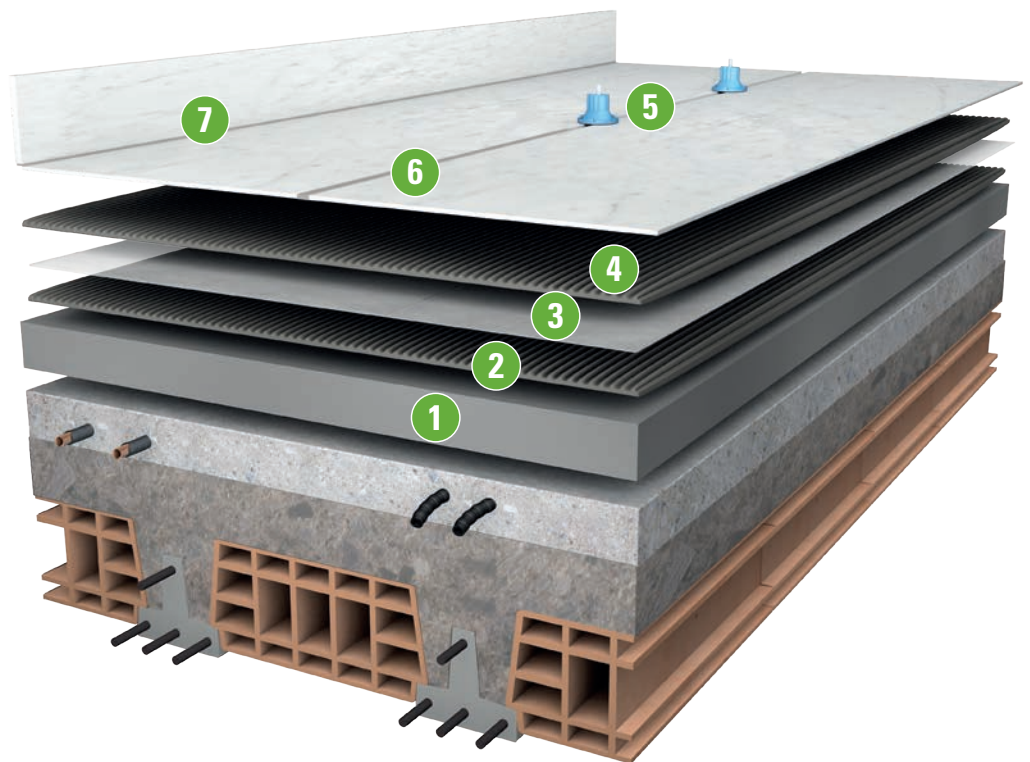
Rating 5  
 Preparation of the screed  
 $\approx 16 - 18 \text{ kg/m}^2$   
 per cm of thickness





## Laying of thin and large size tiles

- Guarantees safe laying of thin elements
- Ensures high resistance to compression
- Suitable for renovation work
- Reduces operation times
- System with very low VOC emissions, improves the quality of air and increases the level of health protection for operators



7\_



### Expansion joints

#### Silicone Color

Decorative sealant for tiles and mosaic in 50 design colours.  
 Green product for bio-building.

Rating 3  
 Coverage see data sheet



6\_



### Grouting

#### Fugabella® Color

Decorative Resina-cemento® (resin-cement) for grouting of ceramic and porcelain tiles, mosaic and natural stone in a 50-colour design range. Green product for bio-building.

Rating 4  
 Coverage see data sheet



5\_

### Tile laying

#### TLS

Levelling spacers with knobs.

4\_



#### TR Flex S1

Deformable mineral adhesive with an extremely high natural additive content for high performance bonding of porcelain tiles, ceramic tiles and natural stone, with no vertical slip and long open time.

Coverage  $\approx 2 - 5 \text{ kg/m}^2$



3\_

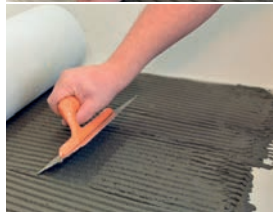


### Anti-cracking

#### TR Tex

Reinforced anti-fracture sheet. Suitable to even out tensile and shear movements between the substrate and the surface finish. For internal floors.

2\_



#### TR Fast

Certified, eco-friendly, mineral adhesive for rapid laying of all types of tile, both internally and externally. Suitable for rapid laying all types of ceramic tiles, porcelain tiles and stable natural stone, even over existing coverings. Ultra-rapid setting also at low temperatures. Prolonged workability.

Coverage  $\approx 2,5 - 5 \text{ kg/m}^2$



1\_



### Substrate

#### Keracem® Eco Pronto

Certified, ready-to-use, eco-friendly, normal-setting and rapid-drying mineral screed to be covered with adhesives.

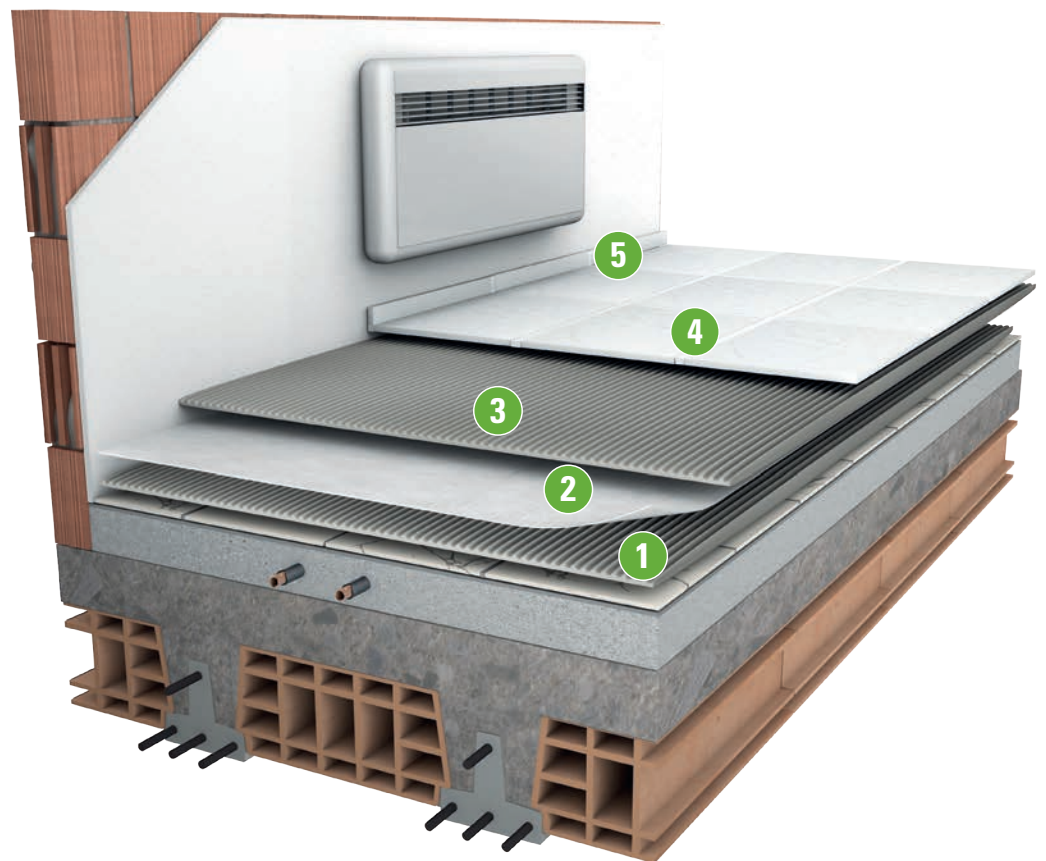
Rating 5  
 Preparation of the screed  
 $\approx 16 - 18 \text{ kg/m}^2$   
 per cm of thickness





## Tile laying on anti-fracture membrane

- Specifically for cancelling out cracks, joints and chases in the substrates
- It compensates for hygrometric shrinkage stress in uncured substrates
- Allows any laying design
- Practical and fast, immediately accessible to foot traffic





5\_



### Expansion joints

#### Silicone Color

Decorative sealant for tiles and mosaic in 50 design colours. Green product for bio-building.

Rating 3  
 Coverage see data sheet



4\_



### Grouting

#### Fugabella® Color

Decorative Resina-cemento® (resin-cement) for grouting of ceramic and porcelain tiles, mosaic and natural stone in a 50-colour design range. Green product for bio-building.

Rating 4  
 Coverage see data sheet



3\_



### Tile laying

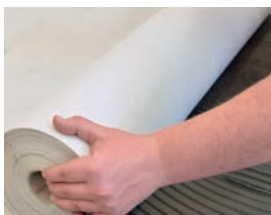
#### TR Fast

Certified, eco-friendly, mineral adhesive for rapid laying of all types of tile, both internally and externally. Suitable for rapid laying all types of ceramic tiles, porcelain tiles and stable natural stone, even over existing coverings. Ultra-rapid setting also at low temperatures. Prolonged workability.

Coverage  $\approx 2 - 5 \text{ kg/m}^2$



2\_



### Anti-cracking

#### TR Tex

Reinforced anti-fracture sheet. Suitable to even out tensile and shear movements between the substrate and the surface finish. For internal floors.

1\_



#### TR Fast

Certified, eco-friendly, mineral adhesive for rapid laying of all types of tile, both internally and externally. Suitable for rapid laying all types of ceramic tiles, porcelain tiles and stable natural stone, even over existing coverings. Ultra-rapid setting also at low temperatures. Prolonged workability.

Coverage  $\approx 2,5 - 5 \text{ kg/m}^2$

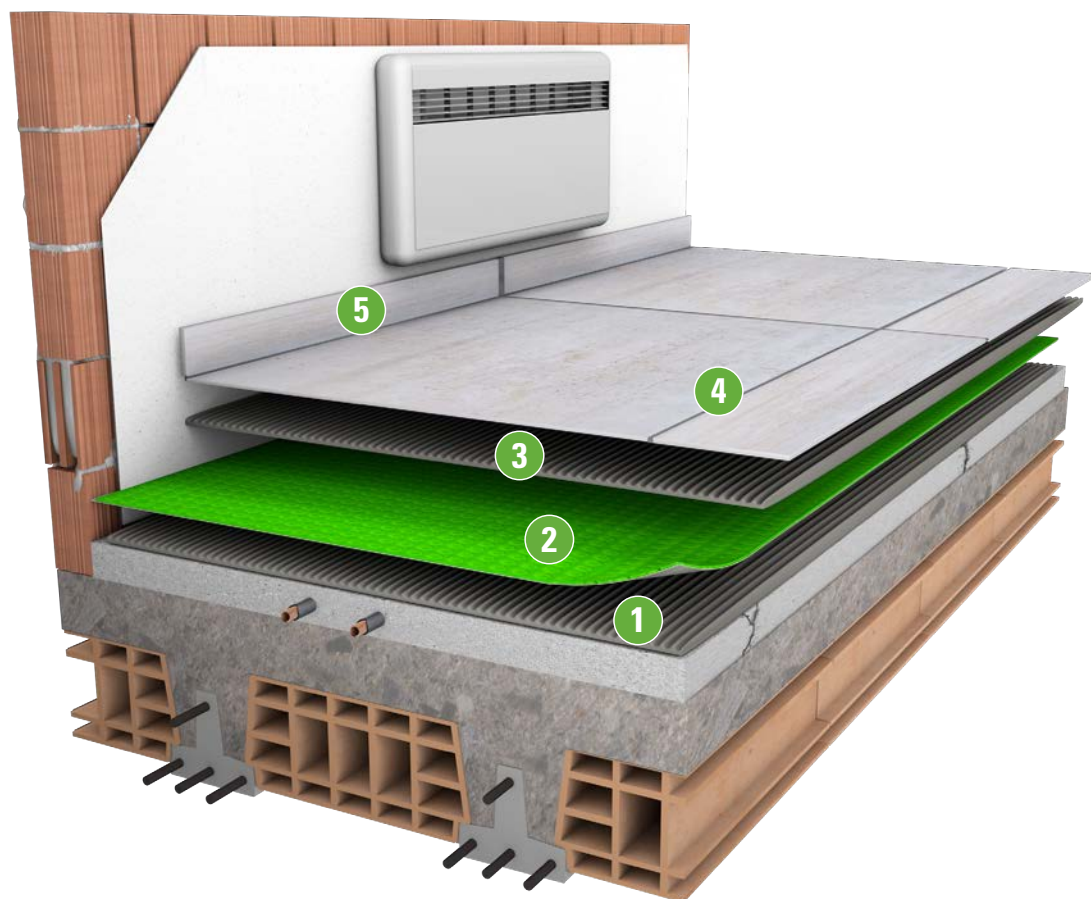


*Existing floor*



## Tile laying on anti-cracking membrane on screed, for internal application

- Specifically for cancelling out cracks, joints and chases in the substrates
- It compensates for hygrometric shrinkage stress in uncured substrates
- Allows any laying design
- Practical and fast, immediately accessible to foot traffic



5



### Expansion joints

#### Silicone Color

Decorative sealant for tiles and mosaic in 50 design colours.  
 Green product for bio-building.

Rating 3  
 Coverage see data sheet



4



### Grouting

#### Fugabella® Color

Decorative Resina-cemento® (resin-cement) for grouting of ceramic and porcelain tiles, mosaic and natural stone in a 50-colour design range. Green product for bio-building.

Rating 4  
 Coverage see data sheet



3



### Tile laying

#### TR Flex S1

Deformable mineral adhesive with an extremely high natural additive content for high performance bonding of porcelain tiles, ceramic tiles and natural stone, with no vertical slip and long open time.

Coverage  $\approx 2 - 5 \text{ kg/m}^2$



2



### Anti-cracking

#### Green-Pro

Uncoupling and anti-cracking waterproof membrane with high adhesion for balconies, terraces and horizontal surfaces before laying ceramic tiles or natural stone; creates a waterproof surface even when overlaid on substrates that are cracked, have not been perfectly cured or might contain vapour pressure due to residual substrate moisture content.

Coverage  $23 \text{ m}^2$  with 1 roll  
 20 m



1



#### TR Fast

Certified, eco-friendly, mineral adhesive for rapid laying of all types of tile, both internally and externally. Suitable for rapid laying all types of ceramic tiles, porcelain tiles and stable natural stone, even over existing coverings. Ultra-rapid setting also at low temperatures. Prolonged workability.

Coverage  $\approx 2,5 - 5 \text{ kg/m}^2$

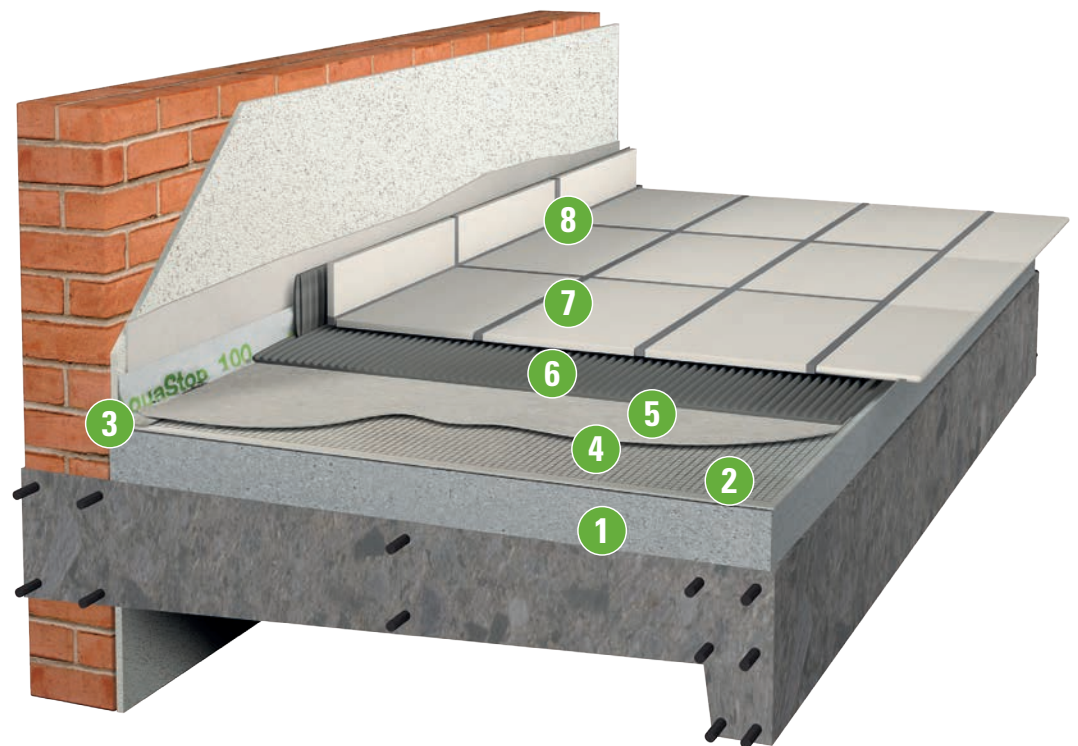


*Screed*



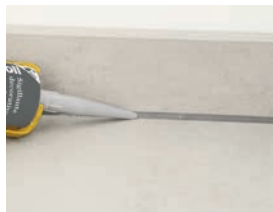
## Tile laying on terraces and balconies

- Guarantees safe laying in difficult temperature and humidity conditions
- Ensures protection of the underlying structure
- Guarantees excellent resistance to changes in temperature
- Complete hydrophobicity
- Fast completion of work
- System with very low VOC emissions, improves the quality of air and increases the level of health protection for operators





8



### Expansion joints

#### Silicone Color

Decorative sealant for tiles and mosaic in 50 design colours.  
 Green product for bio-building.

Rating 3  
 Coverage see data sheet



7



### Grouting

#### Fugabella® Color

Decorative Resina-cemento® (resin-cement) for grouting of ceramic and porcelain tiles, mosaic and natural stone in a 50-colour design range. Green product for bio-building.

Rating 4  
 Coverage see data sheet



6



### Tile laying

#### TR Flex S1

Deformable mineral adhesive with an extremely high natural additive content for high performance bonding of porcelain tiles, ceramic tiles and natural stone, with no vertical slip and long open time.

Coverage  $\approx 2 - 5 \text{ kg/m}^2$



5



### Waterproofing

#### Nanoflex® No Limits® (2<sup>nd</sup> coat)

Super-adhesive, ultra-workable waterproof gel membrane for breathable anti-alkaline and chlorine-resistant waterproofing before laying of porcelain, ceramic tiles and natural stone.

Rating 3  
 Coverage  $\approx 1.15 \text{ kg/m}^2$   
 per mm of thickness



4



#### Aquastop AR1 – Aquastop 100

Special reinforcing mesh made of alkali-resistant glass fibre.



3



Polyethylene, elastic waterproof tape coated on both sides with high-adhesion, non-woven polypropylene for perimeter and fractionizing-expansion joints.



2



#### Nanoflex® No Limits® (1<sup>st</sup> coat)

Super-adhesive, ultra-workable waterproof gel membrane for breathable anti-alkaline and chlorine-resistant waterproofing before laying of porcelain, ceramic tiles and natural stone.

Rating 3  
 Coverage  $\approx 1.15 \text{ kg/m}^2$   
 per mm of thickness



1



### Substrate

#### Keracem® Eco Pronto

Certified, ready-to-use, eco-friendly, normal-setting and rapid-drying mineral screed to be covered with adhesives.

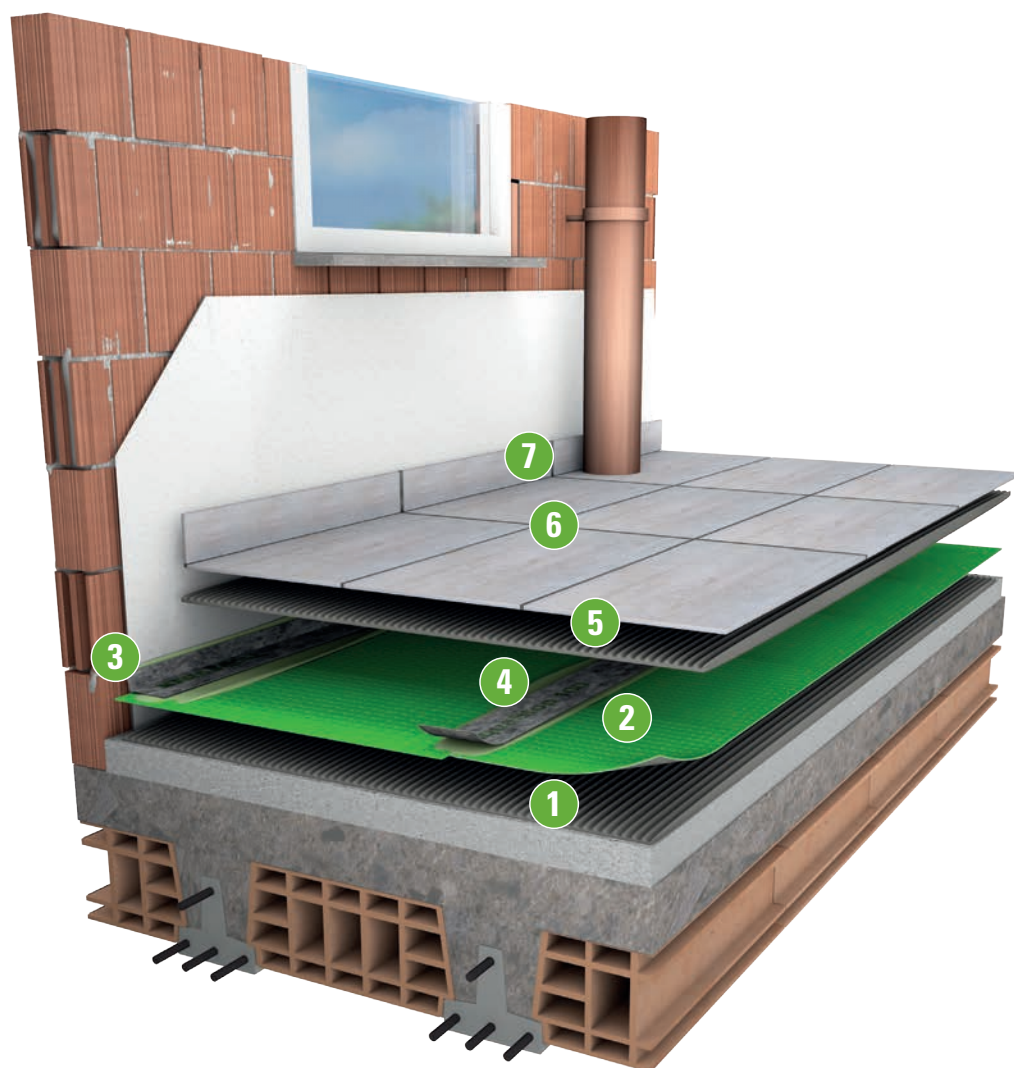
Rating 5  
 Preparation of the screed  
 $\approx 16 - 18 \text{ kg/m}^2$   
 per cm of thickness





## Tile laying on anti-cracking waterproofing membrane

- It waterproofs any surface, old or new, damp or dry, cracked or subject to dimensional variations
- It compensates for hygrometric shrinkage and thermal deformation stress
- It reduces on-site working times: waterproofing and laying of the coating without waiting, withstands foot traffic immediately
- It solves the problem of respecting substrate joints



7



### Expansion joints

#### Silicone Color

Decorative sealant for tiles and mosaic in 50 design colours. Green product for bio-building.

Rating 3  
 Coverage see data sheet



6



### Grouting

#### Fugabella® Color

Decorative Resina-cemento® (resin-cement) for grouting of ceramic and porcelain tiles, mosaic and natural stone in a 50-colour design range. Green product for bio-building.

Rating 4  
 Coverage see data sheet



5



### Tile laying

#### TR Flex S1

Deformable mineral adhesive with an extremely high natural additive content for high performance bonding of porcelain tiles, ceramic tiles and natural stone, with no vertical slip and long open time.

Coverage  $\approx 2 - 5 \text{ kg/m}^2$



4



### Waterproofing

#### Aquastop 100

Certified, eco-friendly, mineral sealant for waterproof, high-adhesion sealing.



3



#### Aquastop Fix

Polyethylene, elastic waterproof tape coated on both sides with high-adhesion, non-woven polypropylene for perimeter and fractionizing-expansion joints.



2



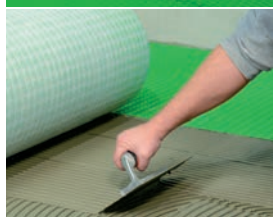
#### Green-Pro

Uncoupling and anti-cracking waterproof membrane with high adhesion for balconies, terraces and horizontal surfaces before laying ceramic tiles or natural stone; creates a waterproof surface even when overlaid on substrates that are cracked, have not been perfectly cured or might contain vapour pressure due to residual substrate moisture content.

Coverage 23 m<sup>2</sup> with 1 roll 20 m



1



#### TR Fast

Certified, eco-friendly, mineral adhesive for rapid laying of all types of tile, both internally and externally. Suitable for rapid laying all types of ceramic tiles, porcelain tiles and stable natural stone, even over existing coverings. Ultra-rapid setting also at low temperatures. Prolonged workability.

Coverage  $\approx 2,5 - 5 \text{ kg/m}^2$



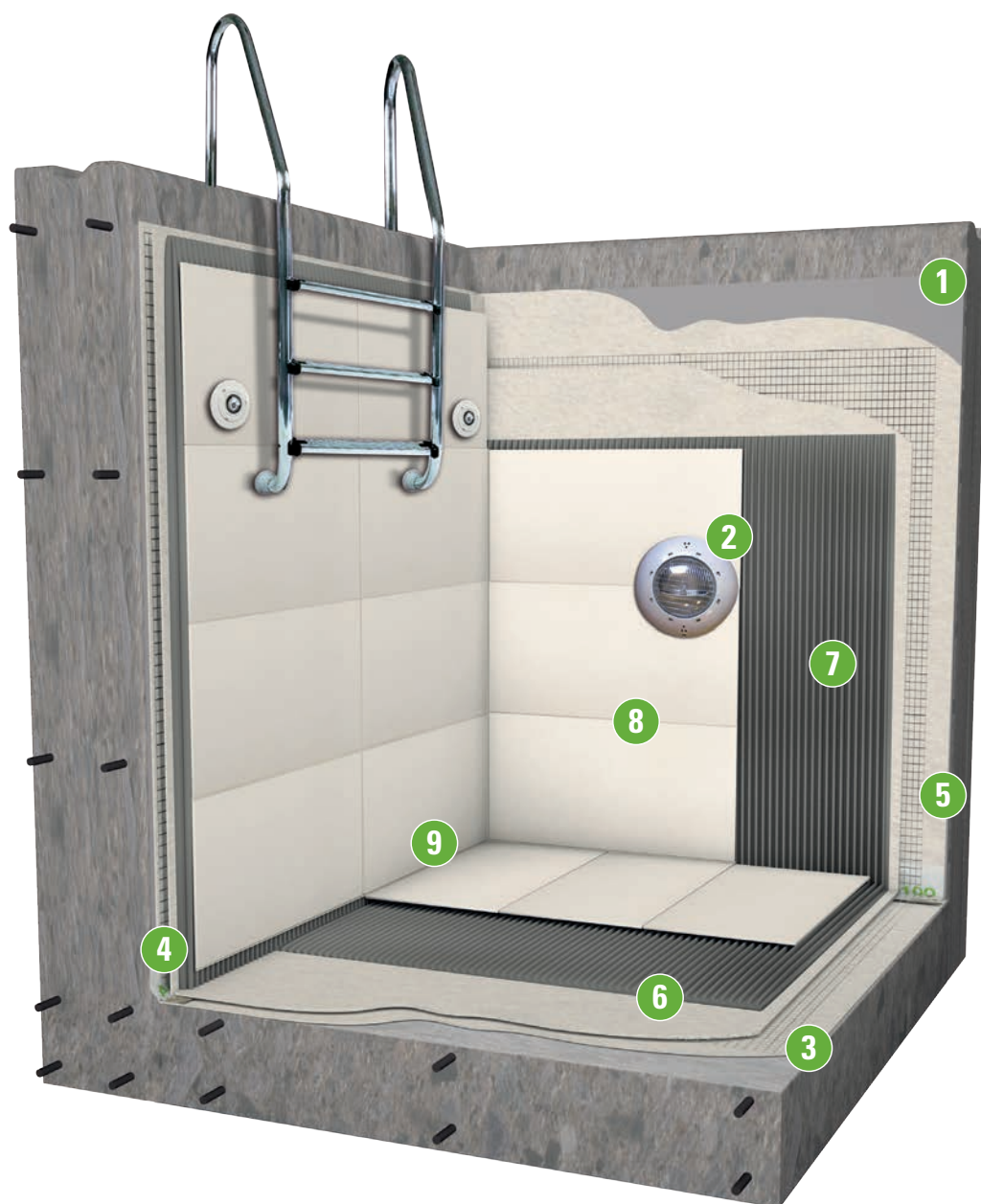
*Substrates: screeds, marble floor tiles, natural stone floorings anchored to the substrate, fibre-cement and plaster-board panels anchored to the substrate. Check mechanical performance and substrates integrity; check the surface cleaning.*



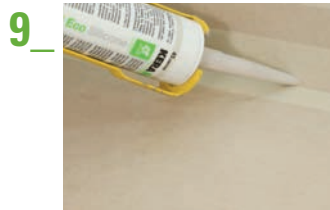


## Tile laying in swimming pool

- Ensures safe laying under continuous immersion
- It is not affected by aggressive water
- Increases the hygiene
- System with very low VOC emissions, improves the quality of air and increases the level of health protection for operators







### Expansion joints

#### Fugabella® Eco Silicone

Eco-friendly, silicone, acetic, anti-mould organic sealant with a high level of elasticity for expansion-deformation joints.

Rating 4  
 Coverage see data sheet



### Grouting

#### Fugalite® Bio

Water-based hypo-allergenic resin for waterproof, stain-proof, silk-effect grouting of porcelain tiles, natural stones and glass mosaic.

Rating 3  
 Coverage see data sheet



### Tile laying

#### TR Flex S1

Deformable mineral adhesive with an extremely high natural additive content for high performance bonding of porcelain tiles, ceramic tiles and natural stone, with no vertical slip and long open time.

Coverage  $\approx 2 - 5 \text{ kg/m}^2$



### Waterproofing

#### Aquastop AR1 – Aquastop 100

Special reinforcing mesh made of alkali-resistant glass fibre.

Coverage  $\approx 2 - 5 \text{ kg/m}^2$



Polyethylene, elastic waterproof tape coated on both sides with high-adhesion, non-woven polypropylene for perimeter and fractionizing-expansion joints.

Coverage  $\approx 2 - 5 \text{ kg/m}^2$



#### Nanoflex® No Limits® (1<sup>st</sup> coat) (2<sup>nd</sup> coat)

Super-adhesive, ultra-workable waterproof gel membrane for breathable anti-alkaline and chlorine-resistant waterproofing before laying of porcelain, ceramic tiles and natural stone.

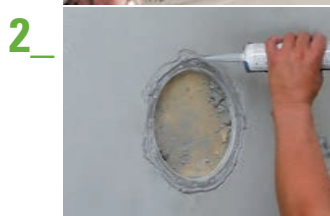
Rating 3  
 Coverage  $\approx 1.15 \text{ kg/m}^2$   
 per mm of thickness



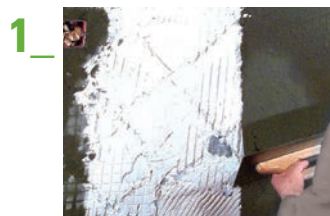
#### Aquastop Nanosil

Eco-friendly rigid neutral silane sealant for waterproof sealing of hydraulic and electric systems, through elements and construction elements in pools

Coverage  $\approx 10 \text{ m}$   
 (joint 5x5 mm)  
 with 1 290 ml cartridge



*Lay round covers between wall and wall, wall and floor and in all corners*



### Substrate levelling

#### Keralevel® Eco LR

Certified, fast-acting, eco-friendly, mineral levelling product for the high-performance, high-thickness correction of irregular substrates.

Levelling  $\approx 1.5 \text{ kg/m}^2$   
 per mm of thickness



## Tile laying on façades

- Guarantees safe laying in difficult temperature and humidity conditions
- Guarantees excellent resistance to changes in temperature
- System with very low VOC emissions, improves the quality of air and increases the level of health protection for operators



4\_



### Expansion joints

#### Neutro Color

Decorative sealant for façades and natural stone in 12 design colours. Green product for bio-building.

Rating 3  
 Coverage see data sheet



3\_



### Grouting

#### Fugabella® Color

Decorative Resina-cemento® (resin-cement) for grouting of ceramic and porcelain tiles, mosaic and natural stone in a 50-colour design range. Green product for bio-building.

Rating 4  
 Coverage see data sheet



2\_



### Tile laying

#### TR Flex S1

Deformable mineral adhesive with an extremely high natural additive content for high performance bonding of porcelain tiles, ceramic tiles and natural stone, with no vertical slip and long open time.

Coverage  $\approx 2 - 5 \text{ kg/m}^2$



1\_



### Undercoat plaster

#### GeoCalce® G Antisismico

Large-grain, breathable structural geo-mortar made from pure natural NHL lime and geo-binder – Class M15. Specific for use as a fine-grain mineral concrete to be used with electro-welded meshes in certified structural reinforcement, improvement and seismic adaptation systems. Suitable for consolidation and repair of masonry works. Certified to improve the safety of buildings.

Rating 5  
 Coverage  $\approx 14.5 \text{ kg/m}^2$   
 per cm of thickness







LA POSA PER ECCELLENZA  
**ECHNORIUNITE**



